

STENGADE

GENERAL INFORMATION

ADDRESS: Stengade 18, DK 2200 Copenhagen N.

PHONE: +45 35 35 50 69

MAIL: INFO@STENGADE.DK

www.stengade.dk

<https://www.facebook.com/spillestedetstengade/>

Production contact: See separate production plan forwarded to you by promoter.

This document is an integrated part of the show contract. All deals are based on our standard technical specifications, including but not exclusive to SPL policy (see contents) and therefore must be signed by all involved parties. A completed signature therefore constitutes acceptance of both technical specifications and SPL policy.

Name _____

Undersigned _____ Date _____

CONTENTS

Venue information

SPL policy

Salen / Main stage

Sound

Light

Café Retrograd / Small stage

Driving instructions



Welcome to Spillestedet Stengade

We support upcoming bands, alternative music and niche genres with a music profile that is open to innovation and strengthens the development of emerging talents.

Spillestedet Stengade is a non-profit and volunteer run venue. All surplus is spent on high quality live music events and developing our house for better production facilities.

BACKSTAGE/HOSPITALITY:

Please note that capacity of the current backstage room at Stengade is app. 8 - 10 persons. The backstage is on 1st floor, while toilet and shower facilities are in the basement. Washer & dryer available (Ask in advance).

Please note that all deals are based on Stengade standard catering rider. Stengade will provide a nice hot meal, local beers (4 per person), soft drinks, coffee, tea, milk, mineral water, snacks and towels.

INTERNET: Ask on the day. WIFI is present.

Parking and loading at the front.

Space for 1 x nightliner or 4 vans

External power

1x 16A 3 phase CEE (available for tour bus on advance)

1x 10A 1 phase CEE

STENGADE SPL POLICY SALEN

Stengade enforces a clear Sound pressure level regulation in salen.
The policy can be broken down in to five sections:

Leq 15 100dBa

This represents our utmost action limit. It is above this SPL vs time limit that we begin to effect external and local noise environment.

Over the years a number of surveys have been conducted between Stengade, Copenhagen city concil and the local house associations resulting in the upper action limit. The surveys reviled that at the measurement points (being the closets habitable apartments) an internal SPL of 108dBa (measured from foh) was clearly audible and constitutes a nuisance to residents. It was therefore decided that a working limit of 100 dBa was suitable for both high energy concerts and keeping well below a notable environmental disturbance. So far there is no intention to review this upper action limit.

Leq 120 96dBa

This represents our secondary action limit. This relates to the general exposure of crew and audience during and over the course of the show. This is a direct interpretation of the NIOSH/EU workplace noise regulations (Leq 480 85dBa with an exchange rate of 3 dB). Keeping within this limit over the course of an even can help us to regulate long term exposure to crew and public and work towards preventing permanent hearing damage.

Instantaneous 107 dBa

As in line with the first and secondary action limits, instantaneous levels of 107 dBa should NEVER be exceeded at any point in the venue, stage, foh or otherwise. Levels exceeding this point are no longer associated with safe exposure windows according to NIOSH/EU regulations. Please be aware that measurements from foh may read lower than this but be aware that it may be happening on stage other otherwise and take actions to prevent it. Not only are levels exceeding 107dBa potentially hazardous, they are also reaching the level of sound pressure that can cause external environmental nuisance.

Instantaneous 140dBc

Levels should NEVER exceed 140dBc at Stengade. Beyond this, certain damage to the health or the crew and public is highly likely and should be avoided at all costs. It is possible to present low frequency content at these levels in salen with Stengade pa equipment.

Leq 480 85 dBa

A suggested upper action limit according to NIOSH/EU and mandatory under EU law for crew and employees to wear personal or supplied hearing protection if daily exposure is exceeding this.

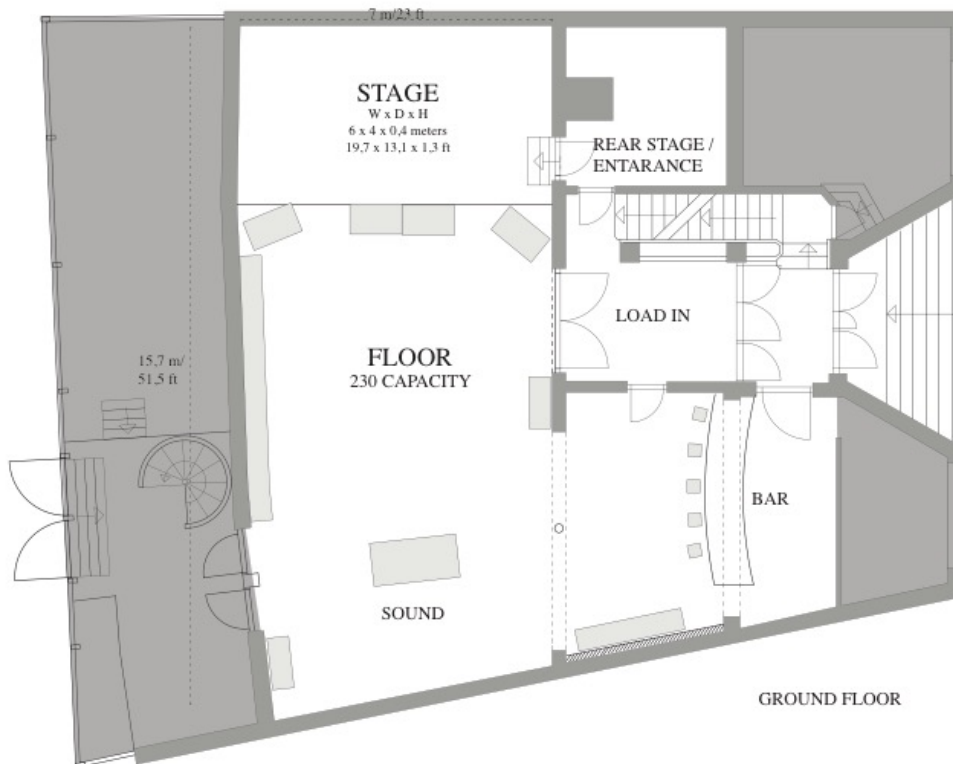
A note on measurement and logging.

All official measurement and logging in salen is carried out by a calibrated class 1 IEC 10eazy system. Logging will take place on every event or production rehearsal (acoustic or amplified).

TECHNICAL SPECIFICATION

SALEN / MAIN STAGE

All deals are based on Stengades standard technical specifications.



Stage Dimensions (W x D x H): 6 x 4 x 0,4 meters

Horizontal clearance: 4,80 meters

Vertical clearance: 2,70 meters, (2,30 stage to the ceiling)

Barrier: No

Capacity: 230 (200 ticket on sale)

POWER

32a (max) 3 phase CEE PA system/monitors/stage rack

16a (max) 3 phase CEE FoH

16a (max) 3 phase CEE Backline

16a (max) 3 phase CEE Dimmer

16a (max) 3 phase CEE Hazer + LED

32a (max) 3 phase CEE Aux

SOUND

Foh console:

Allen & Heath iLive T112 iDR32 stage rack (with Dante installed)

PA system:

2 x VOID acoustics Stasys 3 mk II (3-way)

2 x VOID acoustics Stasys X

1 x xta speaker processor

1 x proel HPD4004

1 x proel HPX 2400

1 x proel HPX 6000

Monitoring (5 wedges on 4 sends)

5 x Void Impulse 4i

1 x LAB fp10000

Microphones

1 x SMb52

6 x SM58

3 x SMb58

4 x SM57

1 x SMb57

1 x SMb91

4 x SM94

5 x Sennheiser 604

2 x Røde NT5

1 x AKG c535

1 x Audix i5

8 x LD active DI

2 x Radial passive DI (stereo)

4 x LA active DI

Stands:

10 x tall boom stands

10 x small boom stands

(Backline and DJ equipment available on request. Please make arrangement with booker for separate specification)

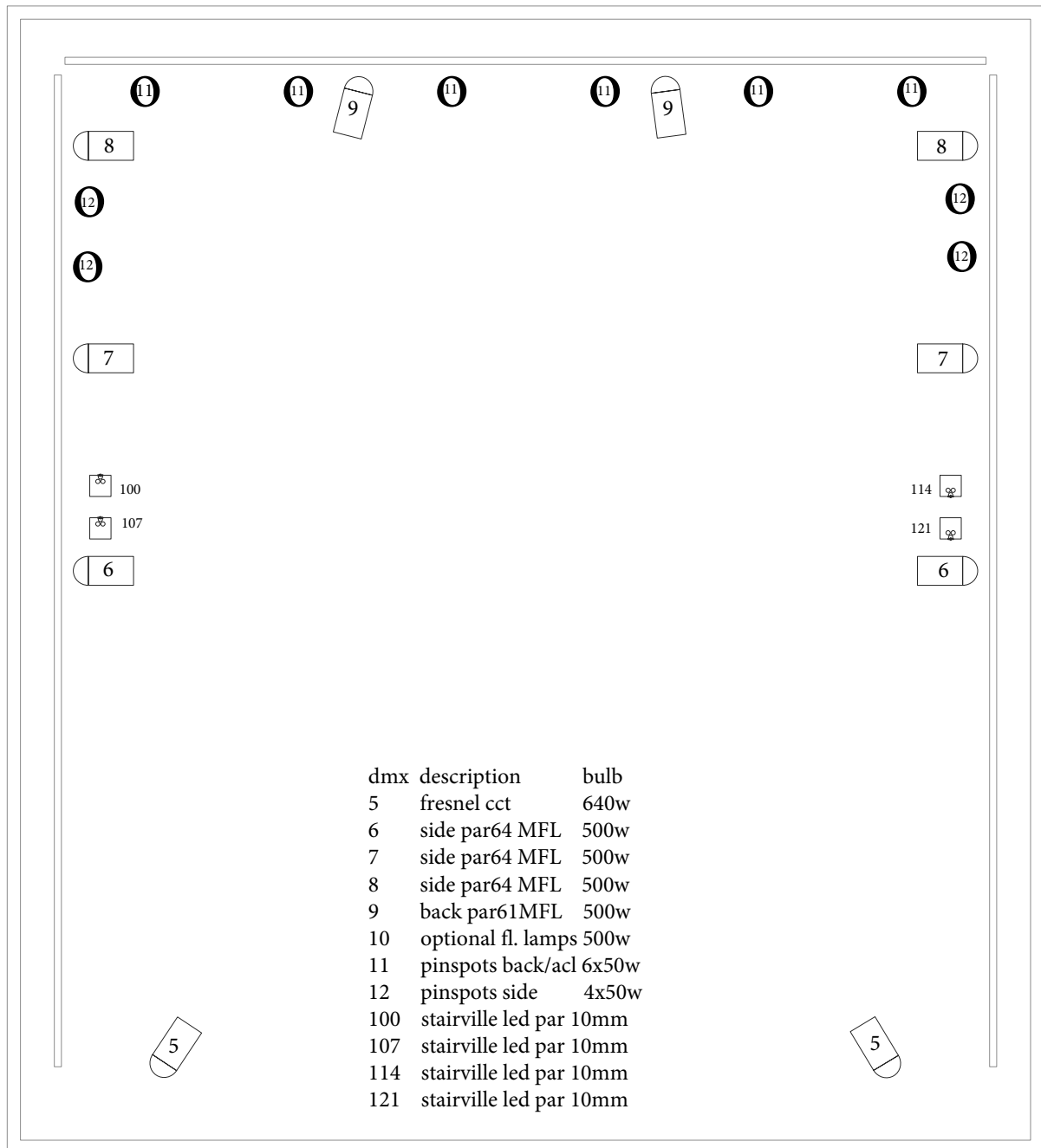
Sound contact: William Smith, sound@stengade.dk

LIGHT

Venue will aim to provide a light-tech who is familiar with local equipment, however due to the availability of volunteers and technical staff we cannot always guarantee this. Please arrange with the booker/promoter if it is essential that you have a dynamic light show.

If you bring your own light-tech - please advance

Desk: Chamsys MagicQ mini wing (1 dmx line) Lenovo laptop



BACKDROP: 6 x 2,30m MAX (see stage dimensions above)

PROJECTIONS: Possible from proscenium, stage and FoH. Please request in advance!!!

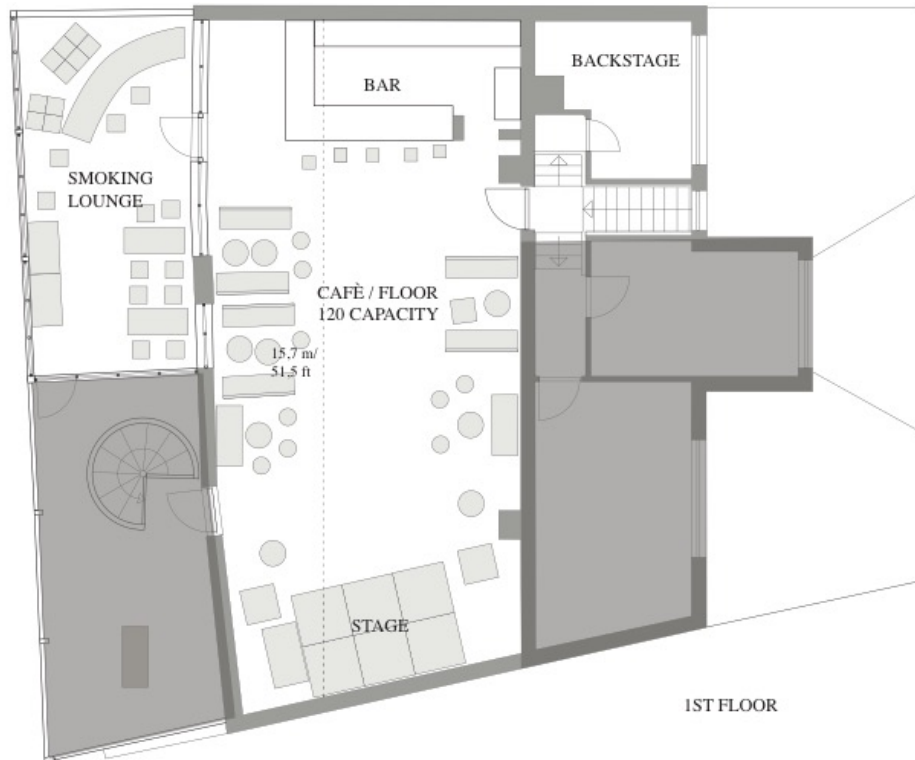
Light contact: Rune Heden, light@stengade.dk

CAFE RETROGRAD / 1ST FLOOR BAR

Stage: 3,60 x 3,60 meters

Clearance: 2,60 meters (2,30 meters from stage to ceiling)

Capacity: 120



SOUND

Please note that Stengade enforces a dB limit of 92dB (A-weighted) averaged over 15 minutes in cafe retrograd.

PA system:

2 x Yamaha DXR 15 (active p.a.)

1 x DSB 118 (active sub)

FoH mixer

Mackie DL1608 + ipad

(Availability of mics, monitors and DJ equipment for cafe Retrograd is dependent on other productions and arrangements in the house. Please make arrangements with the show booker and sound@stengade.dk regarding your needs)

Light: Static side and front LED par56

DRIVING INSTRUCTIONS

Coming from the South/West:

1. Leave highway **E55** at exit **21/02**
2. Turn **left** at **Enghavevej**
3. Continue through **Kingosgade/Alhambrevej/H.C. Ørstedsvej/Griffenfeldtsgade**
4. Turn **right** at **Korsgade**
5. Turn **left** at the first street. **Stengade. Spillestedet Stengade** is located on your **left** hand. Parking and loading at the front. '

Coming from the East:

1. Leave highway **E20** at **20-København C towards 02**
2. Turn **left** at **Sjællandsbroen**
3. Continue by **Sydhavns-gade/Enghavevej/Kingosgade/Alhambrevej/H.C. Ørstedsvej/Griffenfeldtsgade**
4. Turn **right** at **Korsgade**
5. Turn **left** at the first street. **Stengade. Spillestedet Stengade** is located on your **left** hand. Parking and loading at the front.

Coming from the North:

1. Leave highway **E47/E55** at exit **19**
2. Continue by **Lyngbyvejen/Nørre Allé**
3. Turn **Left** at **Tagensvej**
4. Turn **right** at **Øster Søgade/Nørre Søgade**
5. Turn **right** at **Gyldenløvsgade/Åboulevarden**
6. Turn **right** at **Griffenfeldtsgade 7**. Turn **right** at **Korsgade 8**. Turn **left** at the first street. **Stengade. Spillestedet Stengade** is located on your **left** hand.

Parking and loading at the front.

Distances:

- Copenhagen – Aarhus: 304 km
- Copenhagen – Aalborg: 411 km
- Copenhagen – Hamburg: 469 km
- Copenhagen – Berlin: 436 km
- Copenhagen – Stockholm: 659 km

STENGADE

STENGADE 18
2200 KØBENHAVN N

STENGADE.DK

